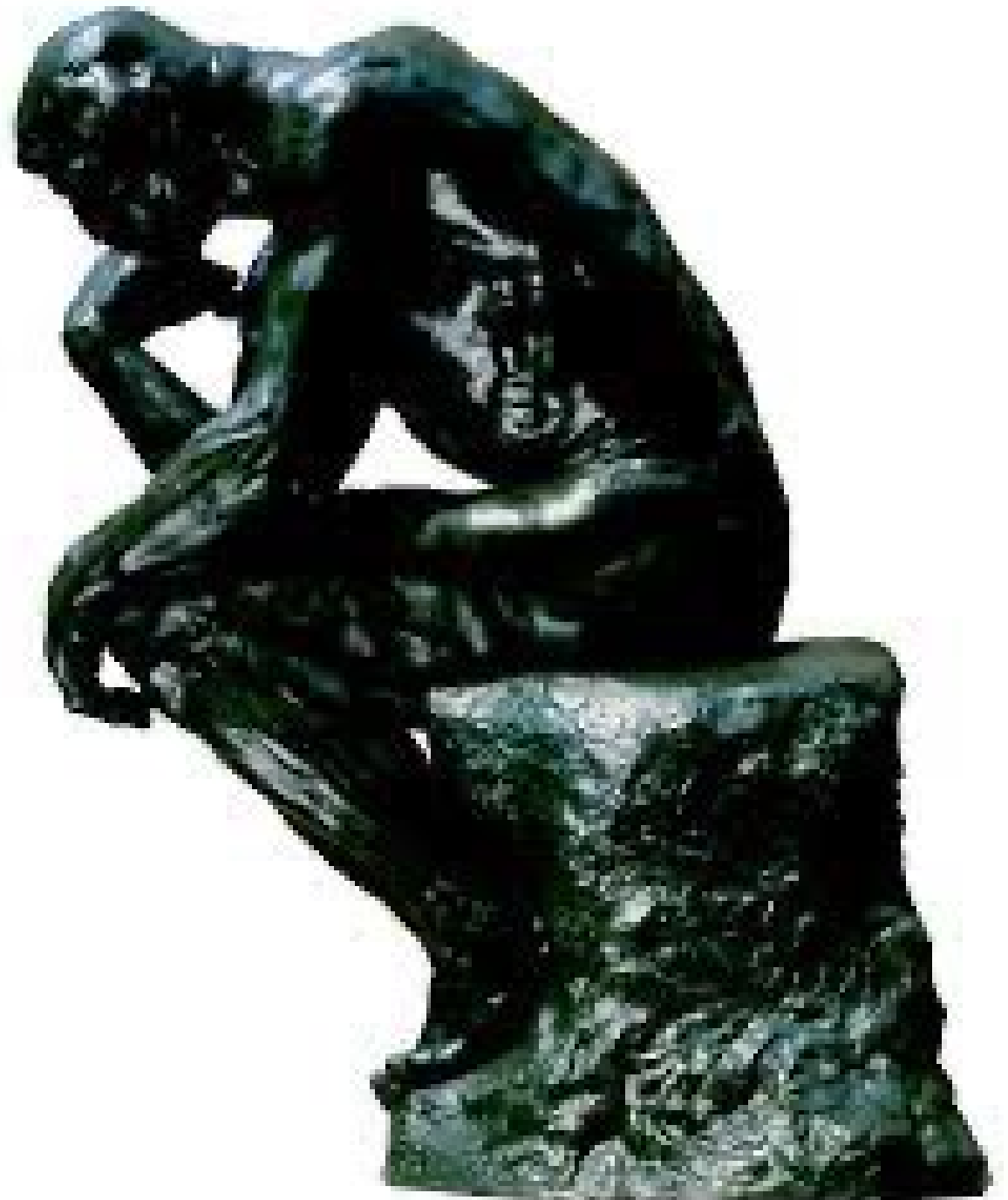
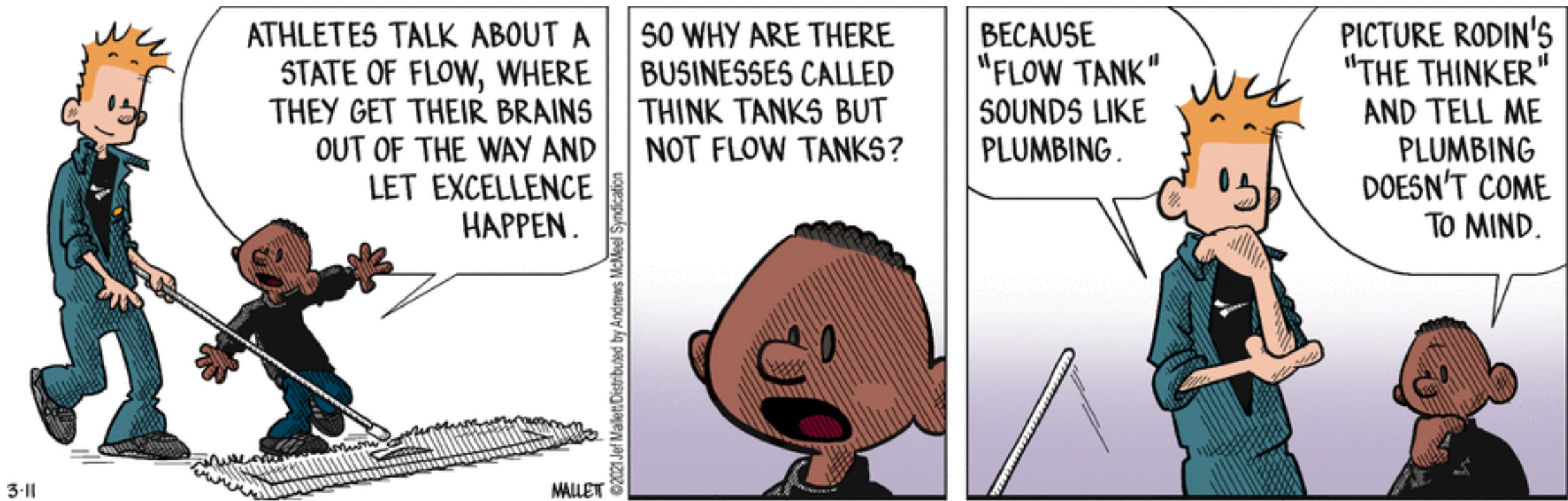


MORE MEETINGS WITH THE MASTERPIECES

WHAT DO YOU THINK WHEN YOU
SEE RODIN'S *THE THINKER*?

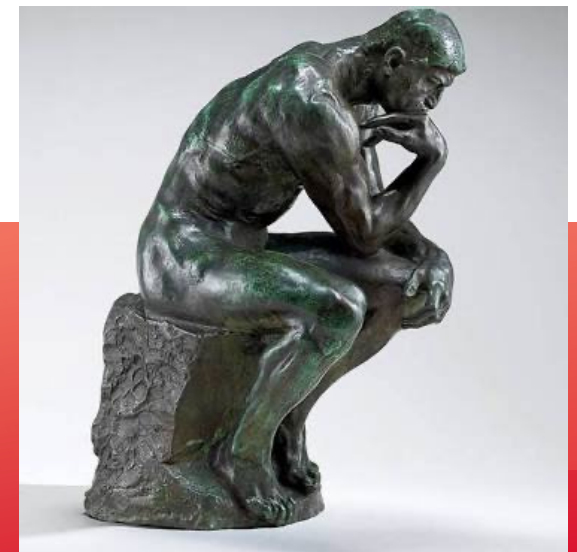
At the Cantor Arts Center, Stanford





FROM *Frazz*. Thanks, Brenda.

IT'S ALL ABOUT MAKING CONNECTIONS

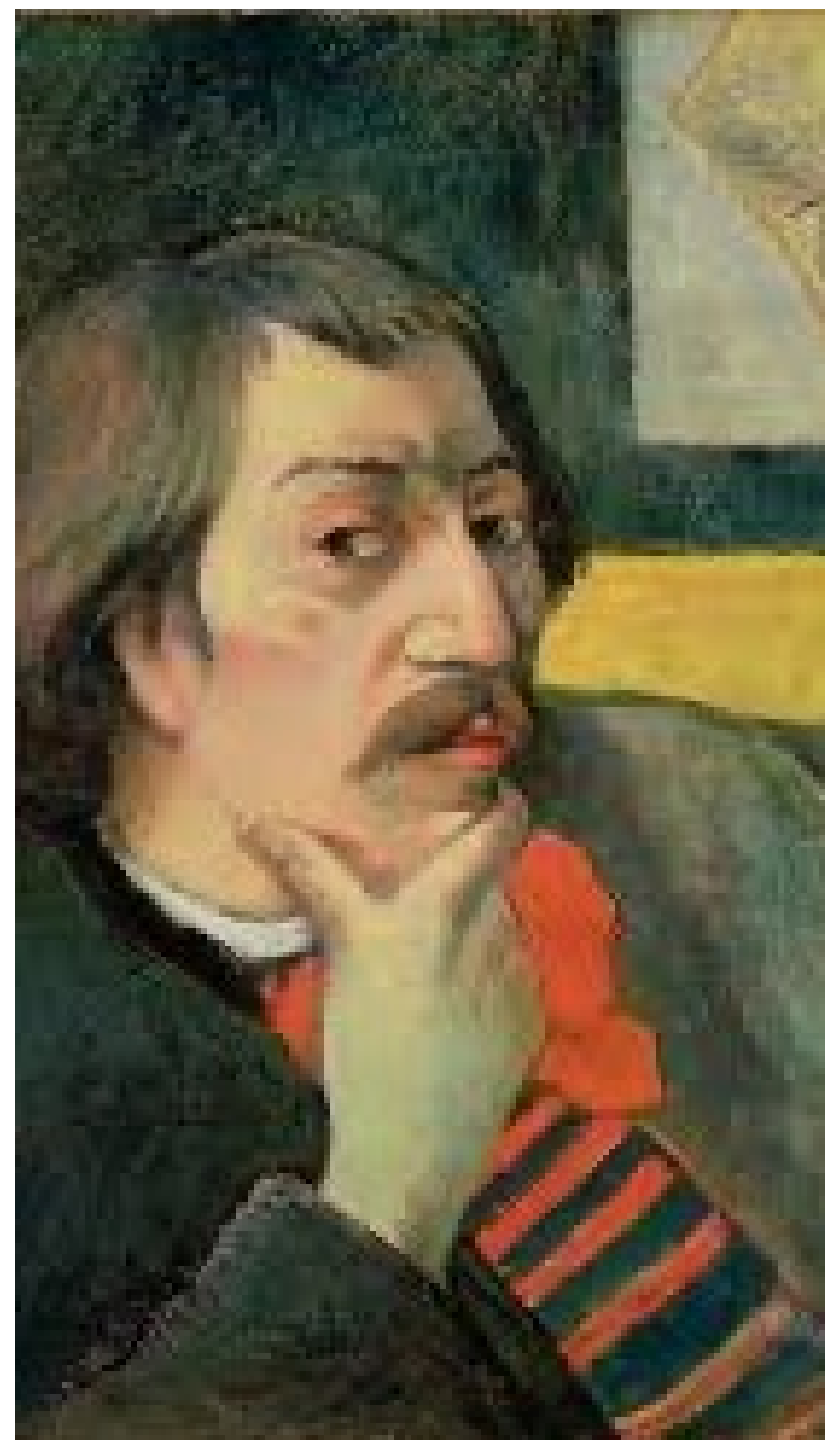


THE COLORS OF THE MIND



PAUL GAUGUIN

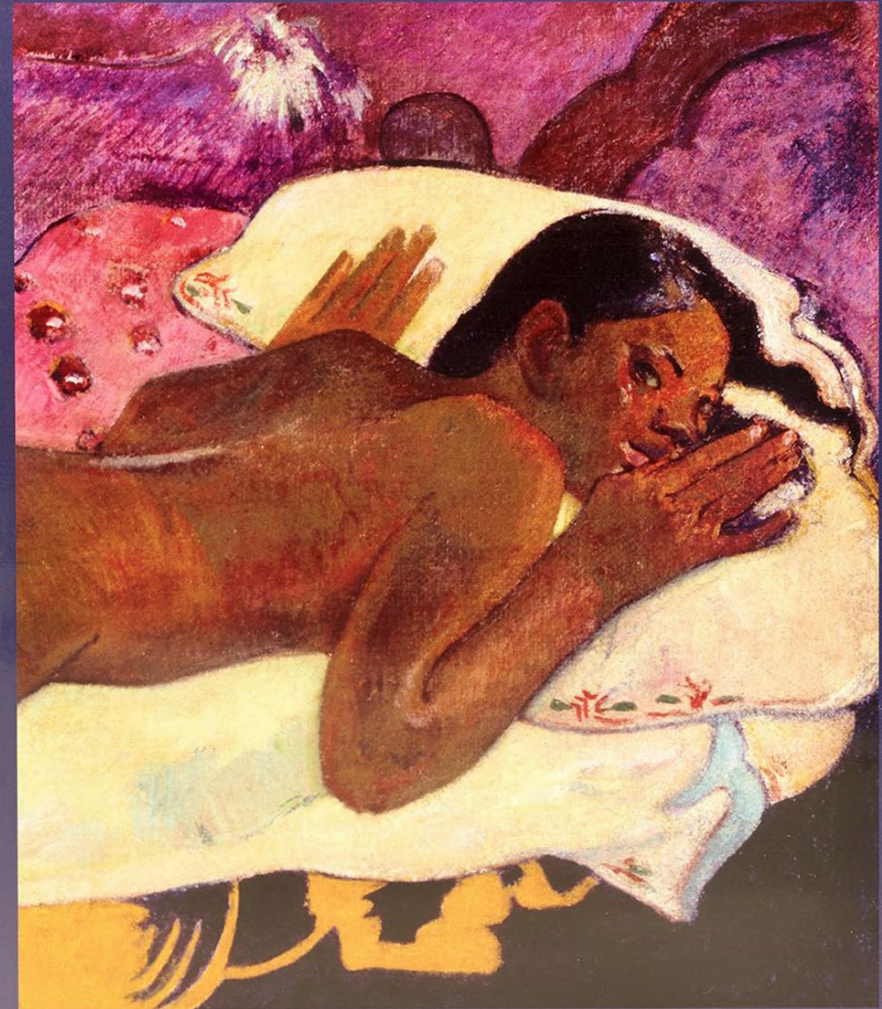
1848 - 1903



YOUTUBE DOCUMENTARY

NARRATED BY WILLEM DAFOE
AND WITH ALFRED MOLINA AS
THE VOICE OF PAUL GAUGUIN,
THIS FILM WAS MADE IN
CONJUNCTION WITH THE
EXHIBITION GAUGUIN: MAKER
OF MYTH AT THE **NATIONAL
GALLERY OF ART**

Gauguin Maker of Myth



A NATIONAL GALLERY OF ART FILM PRESENTATION

**VISION AFTER
THE SERMON
(JACOB WRESTLING
WITH THE ANGEL)**



*Jacob Wrestling
with the Angel*
By Rembrandt van
Rijn 1659





Cloisonné box

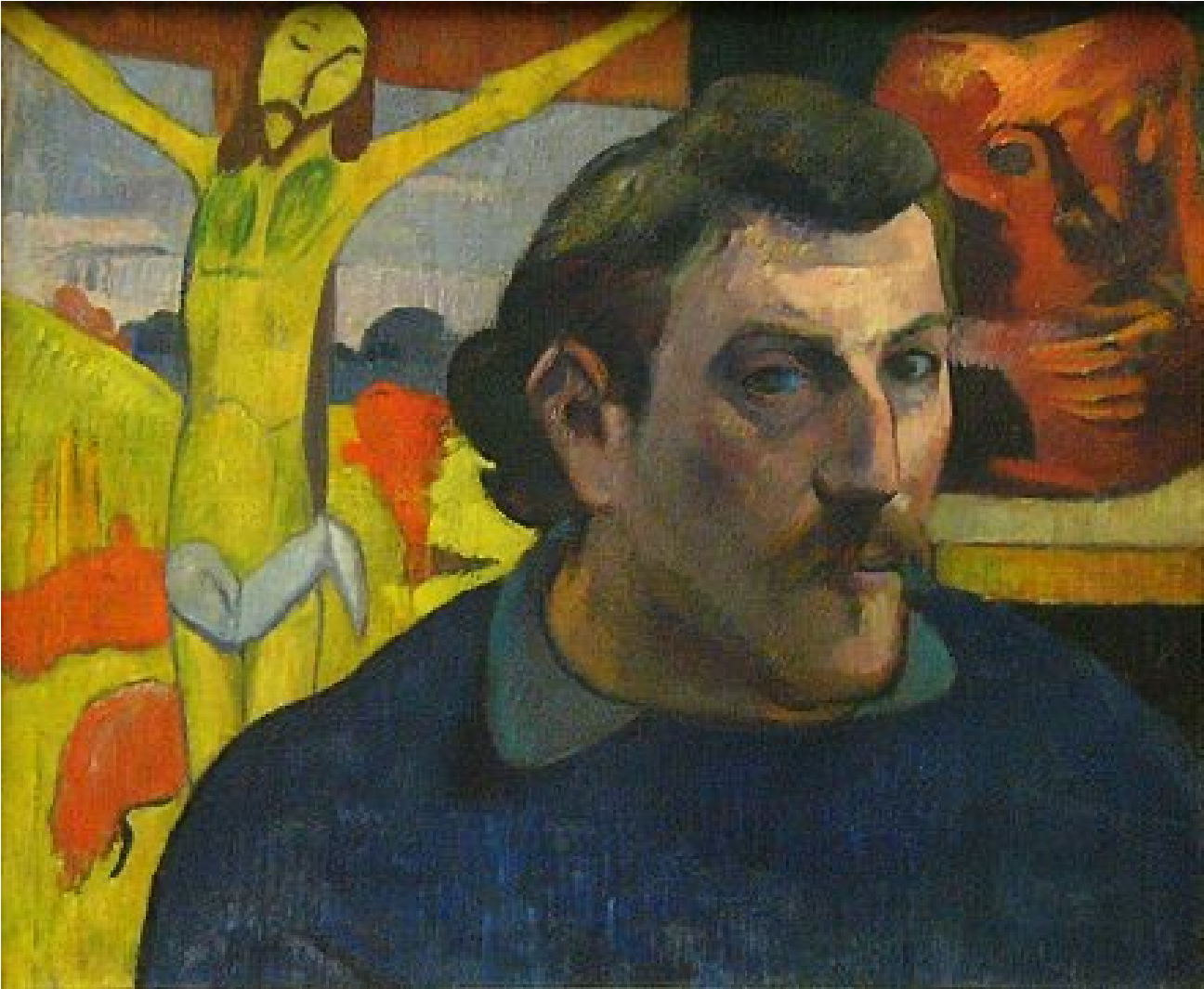
GAUGUIN AND CLOISONNISM



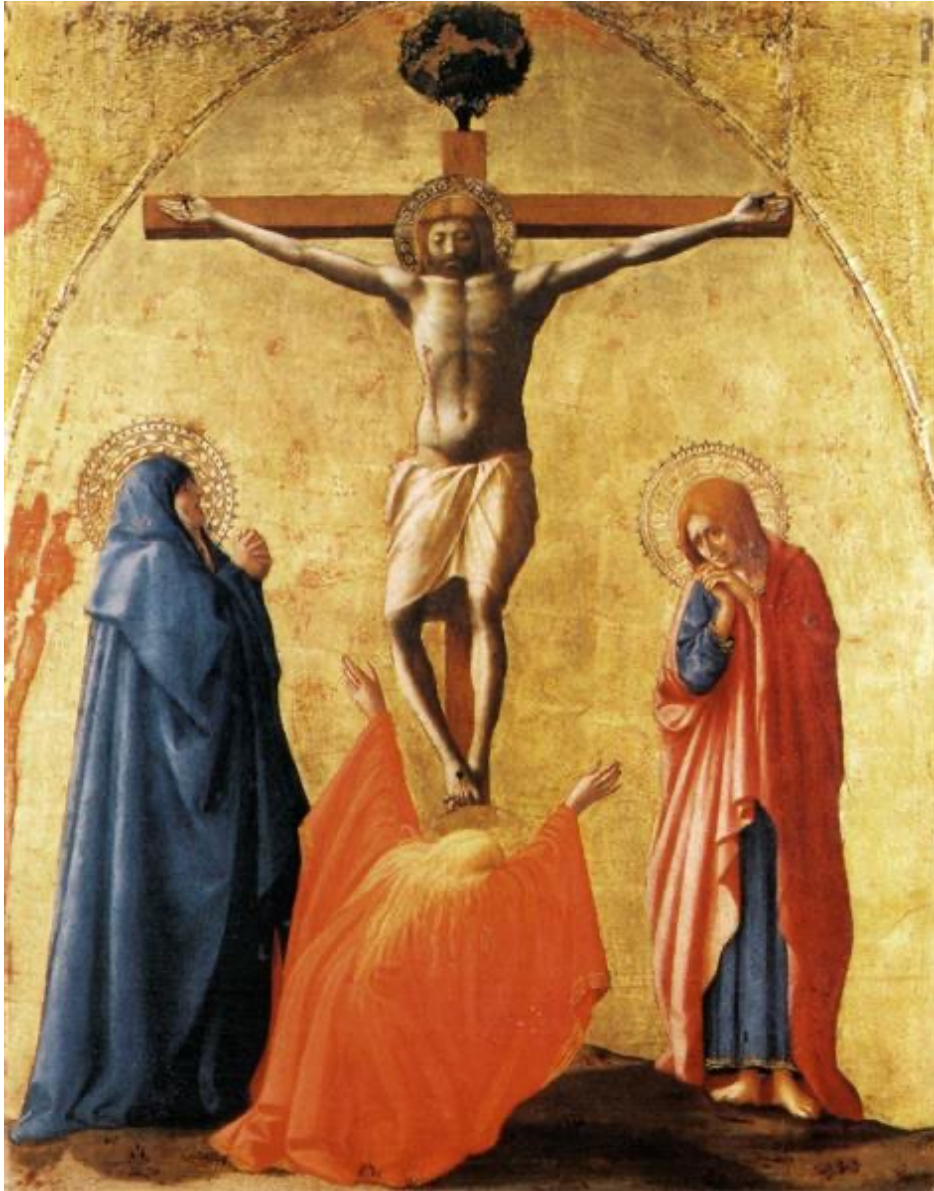


Washerwomen

THE YELLOW CHRIST (SELF-PORTRAIT)



15TH

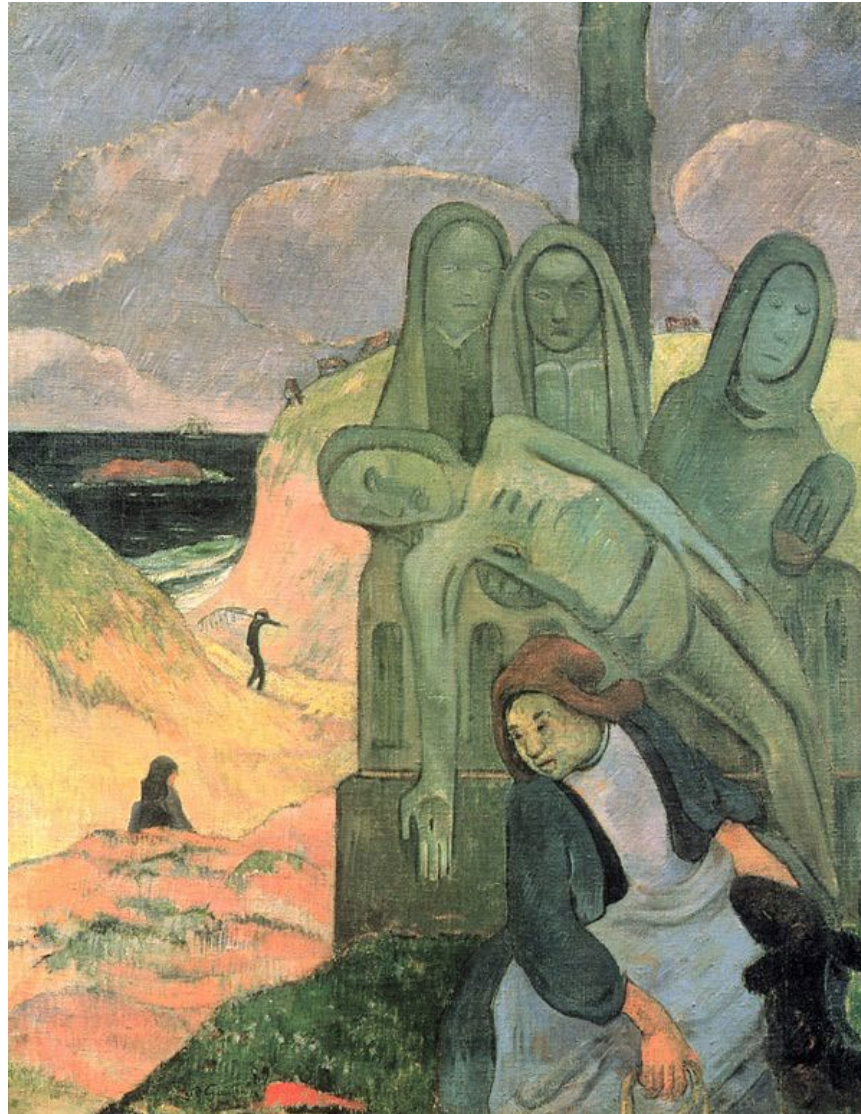


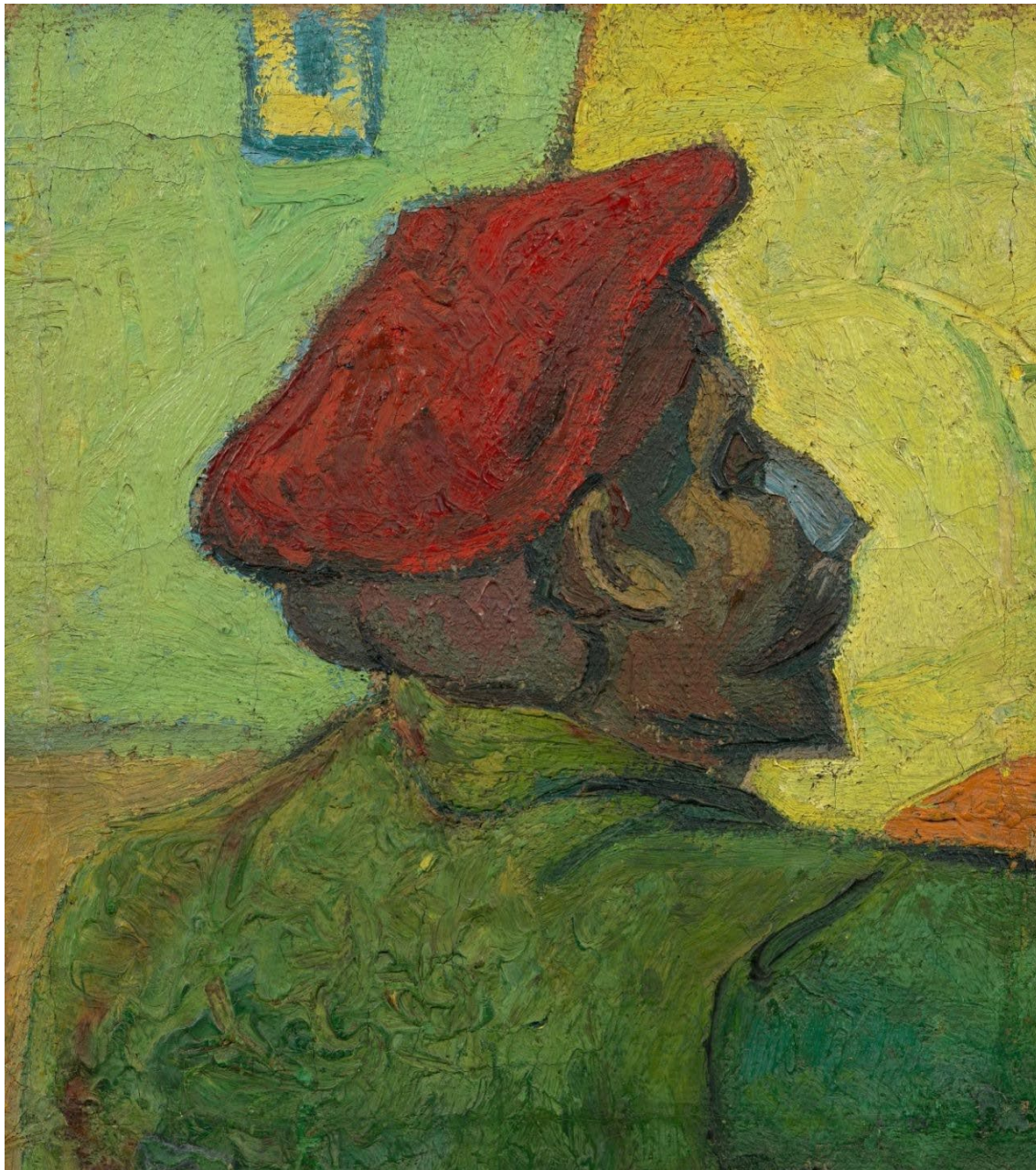
AND

19TH CENTURIES



THE GREEN CHRIST AND PIETA





Paul Gauguin and Gauguin's Chair by Vincent Van Gogh

GAUGUIN IN PROVENCE

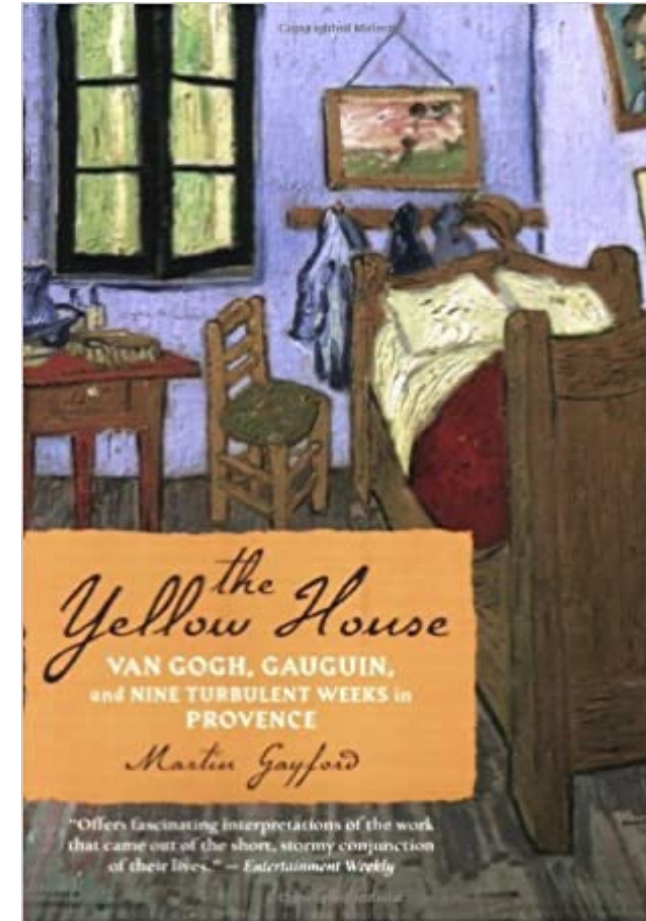


Self-portrait for Van Gogh



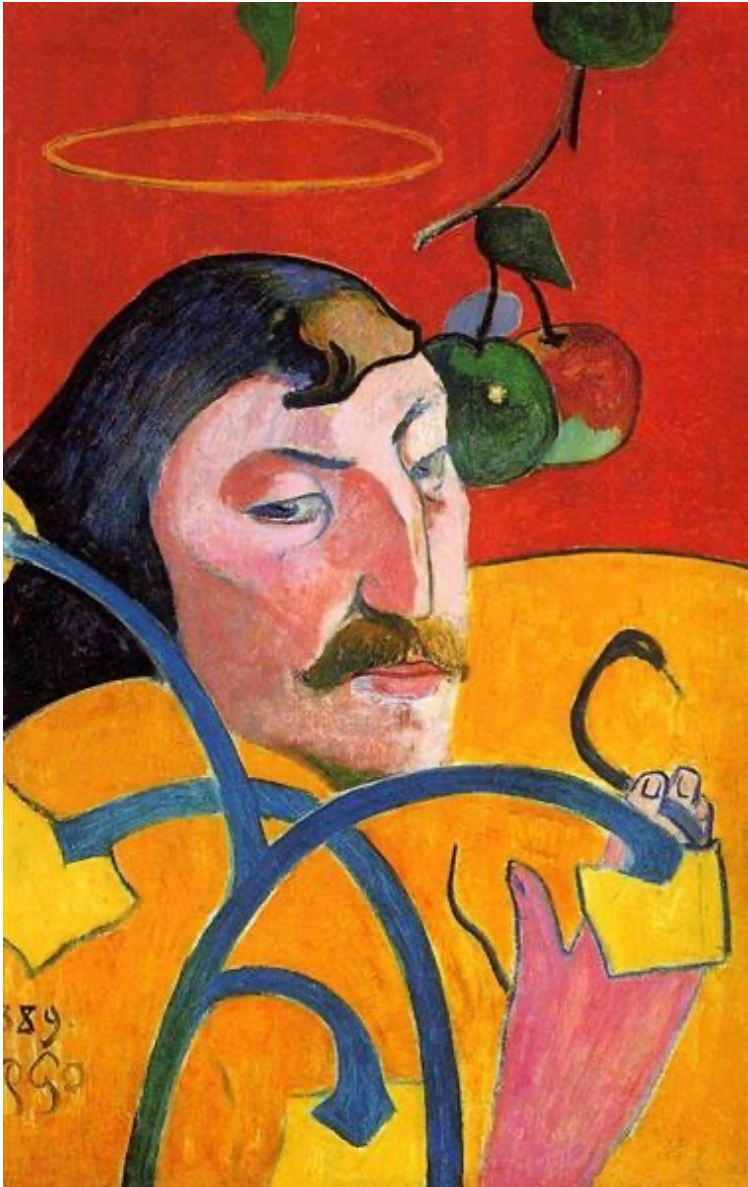
The yellow House

Immersive in San Francisco.



Martin Gayford's Bio

Self-Portrait with Halo and Snake.



Woman Rocking a Cradle

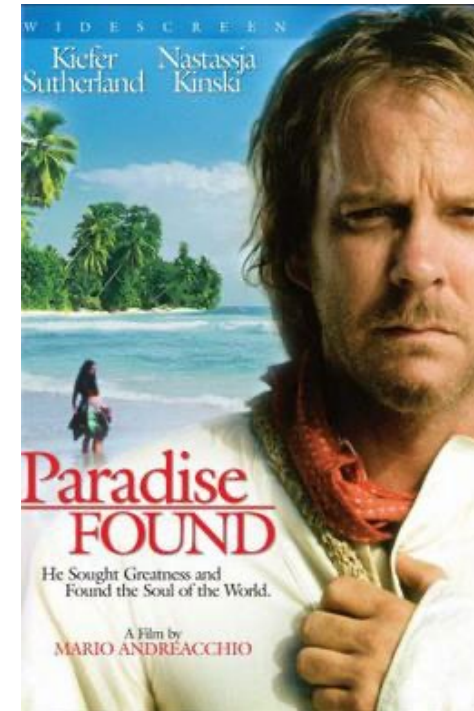
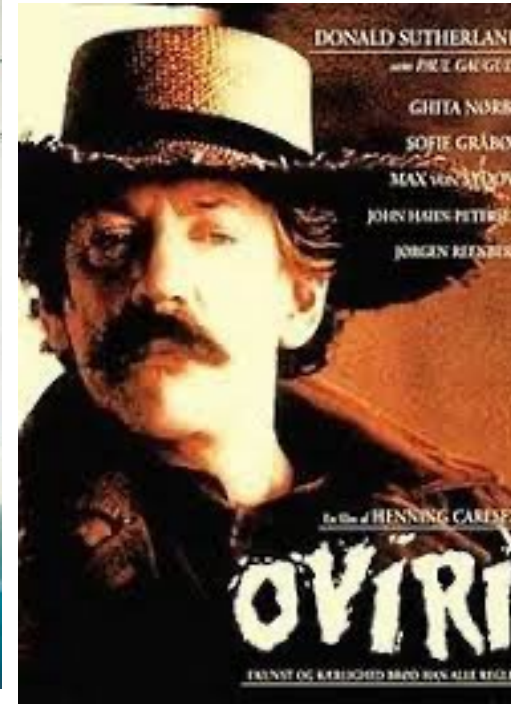
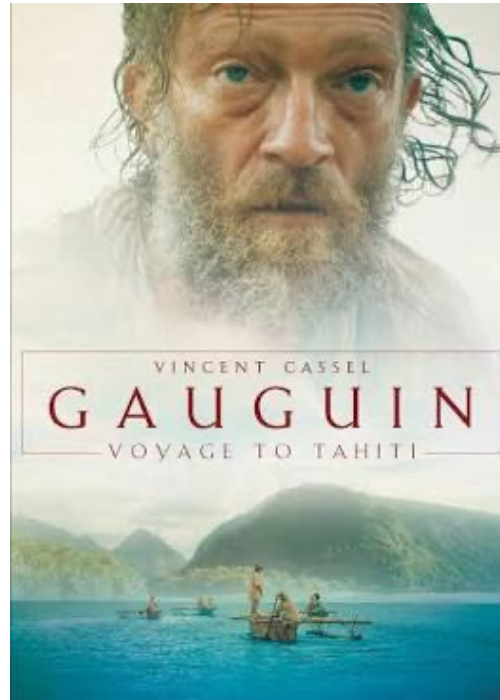
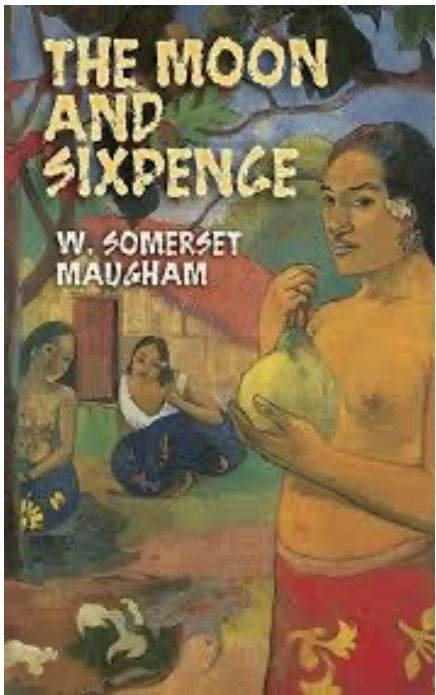


Vahine no te Tiare (Woman with a Flower)



TWO "POST IMPRESSIONISTS"

TAHITI FACT OR FANTASY ?



**TEHAMANA HAS
MANY
ANCESTORS**



PRIMITIVE LIFE –
THE NOBLE SAVAGE VS REALITY



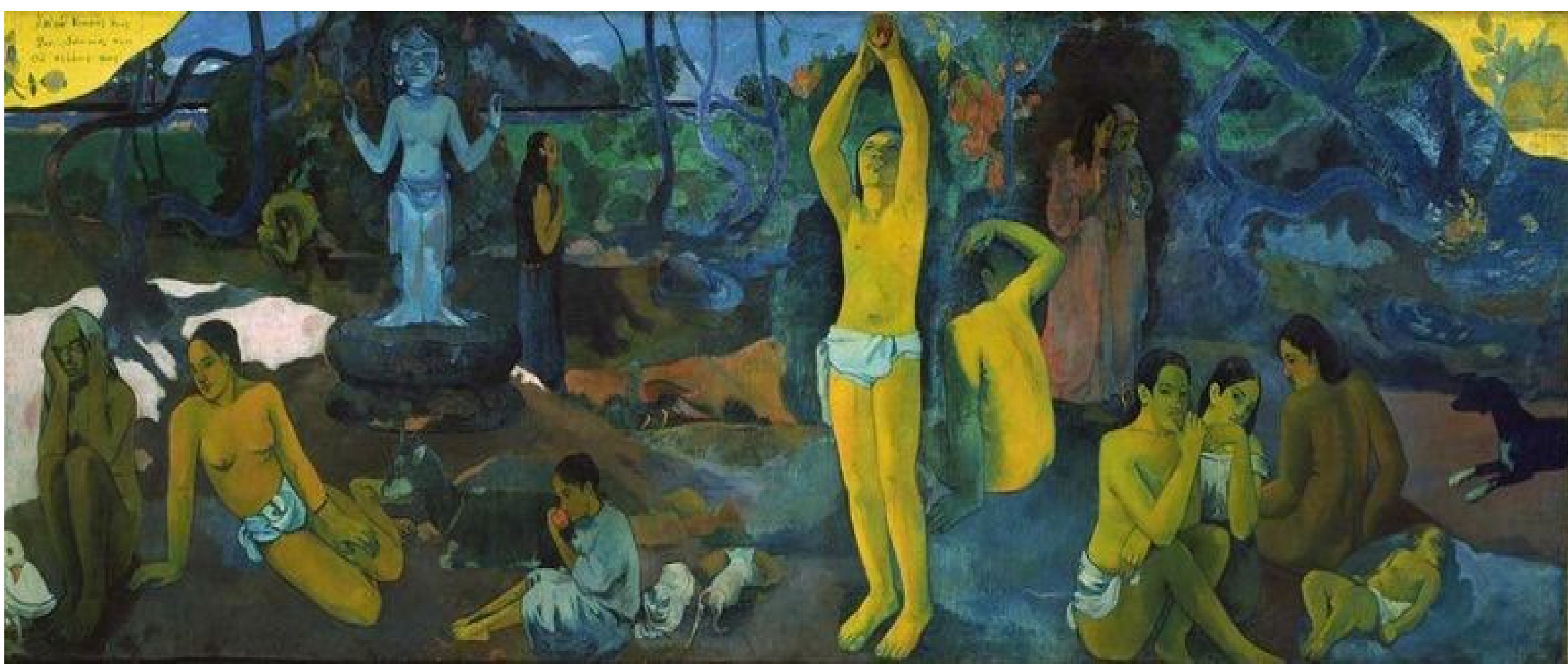
Two Tahitian Women (D.C. Attack)



Parau api (Tahitian Women on the Beach)



Faaturuma (Melancholic)



**WHERE DO WE COME FROM?
WHO ARE WE?
WHERE ARE WE GOING?**

GARDEN OF EARTHLY DELIGHTS



Hieronymus Bosch 1515

EDVARD MUNCH

1863 - 1944



Thanks. Maureen.

MUNCH

AND

ARBUS



Two Girls with Blue Aprons



Identical Twins, Roselle, New Jersey, 1967

THE SCREAM

**“CAN ONLY
HAVE BEEN
PAINTED BY A
MADMAN”**

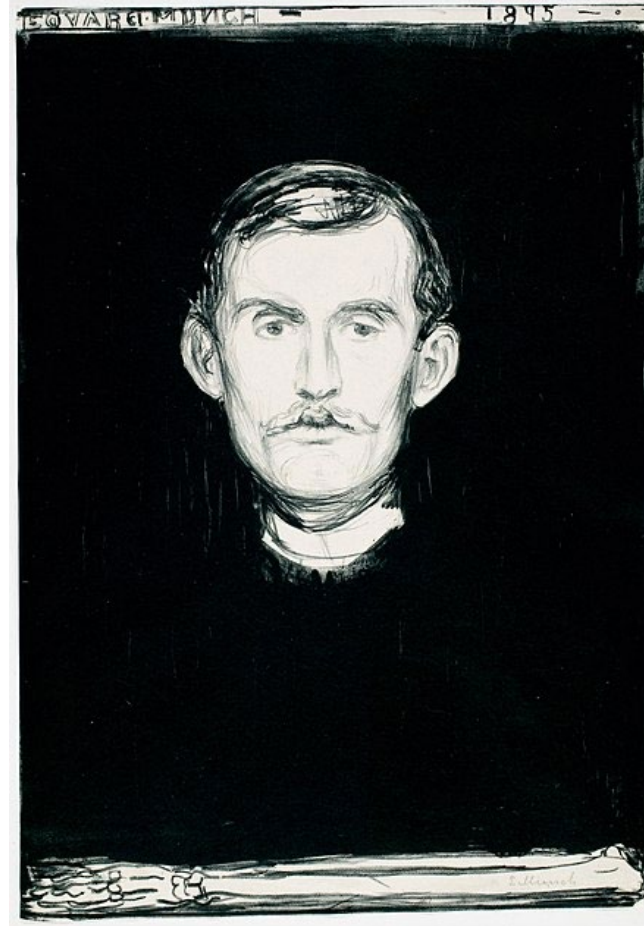


Thanks to Diane Levinson

ANXIETY

MUNCH

JEALOUSY



G O G O L T H A





The Procession to Calvary by Pieter Bruegel the Elder 1564



Landscape with the Fall of Icarus by Pieter Bruegel the Elder 1560



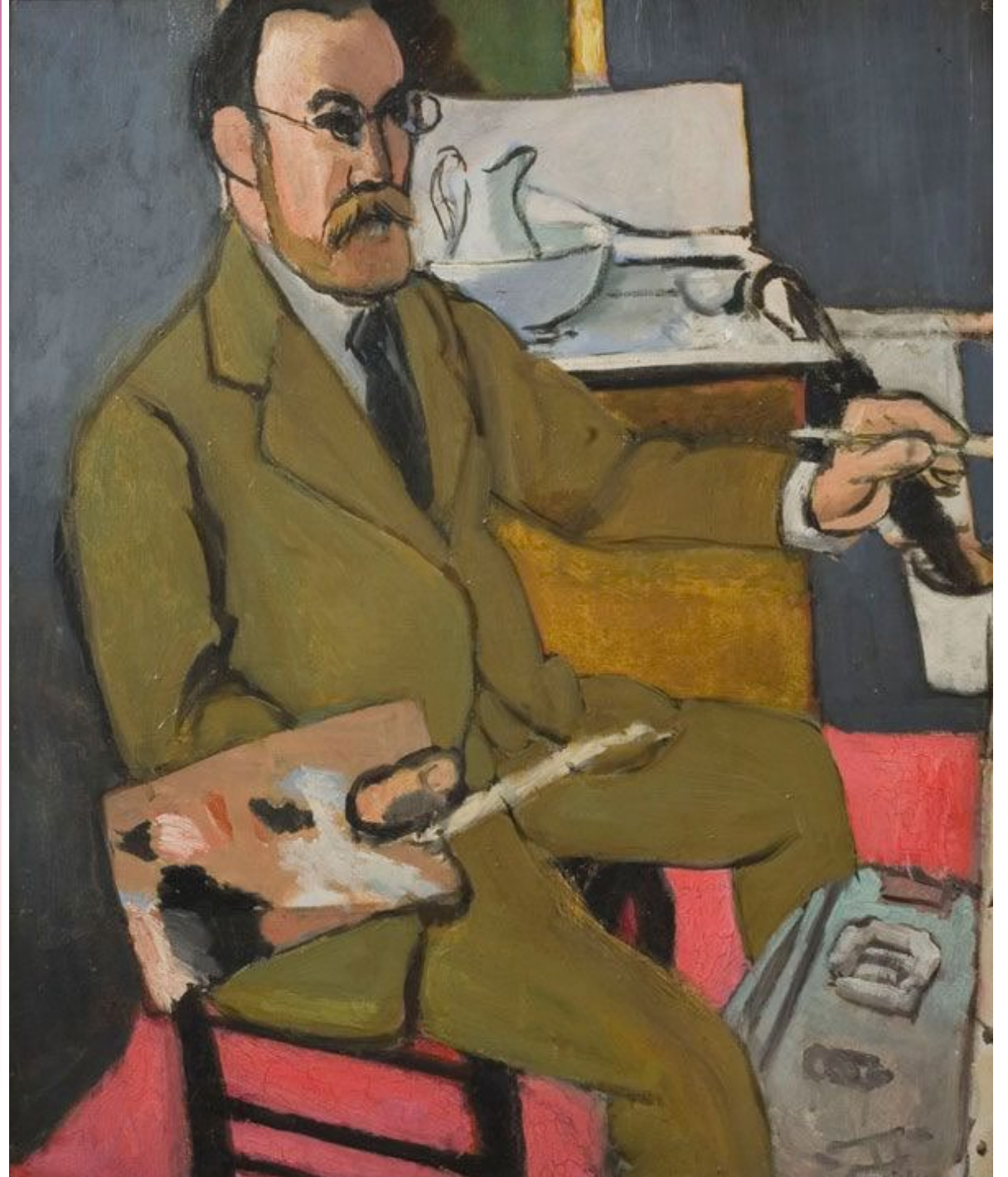
Christ's Entry Into Brussels in 1889 by James Ensor 1888. (at the Getty, Los Angeles)

**THE
WILD
BEASTS**



HENRI MATISSE

1869 - 1954



**THIS IS NOT A
MATISSE!**



Thanks to Diane Levinson



**THE PAINTER'S STUDIO: A REAL ALLEGORY SUMMING UP
SEVEN YEARS OF MY ARTISTIC AND MORAL LIFE
BY GUSTAVE COURBET 1855**

**THIS IS A
MATISSE!**

**PINK
STUDIO**



RED ROOM





WINDOWS AND WOMEN IN THE SOUTH OF FRANCE

SEATED WOMAN BACK TURNED TO OPEN WINDOW YOUNG GIRL IN GREEN DRESS



OPEN WINDOW, COLLIOURE



Collioure



The Roofs of Collioure



Amélie Matisse



WOMAN WITH A HAT SFMOMA

RED MADRAS HEADRESS

SLEEPING NUDE (NORTON SIMON)



ABSTRACTED ANATOMY OF MATISSE AND MICHELANGELO

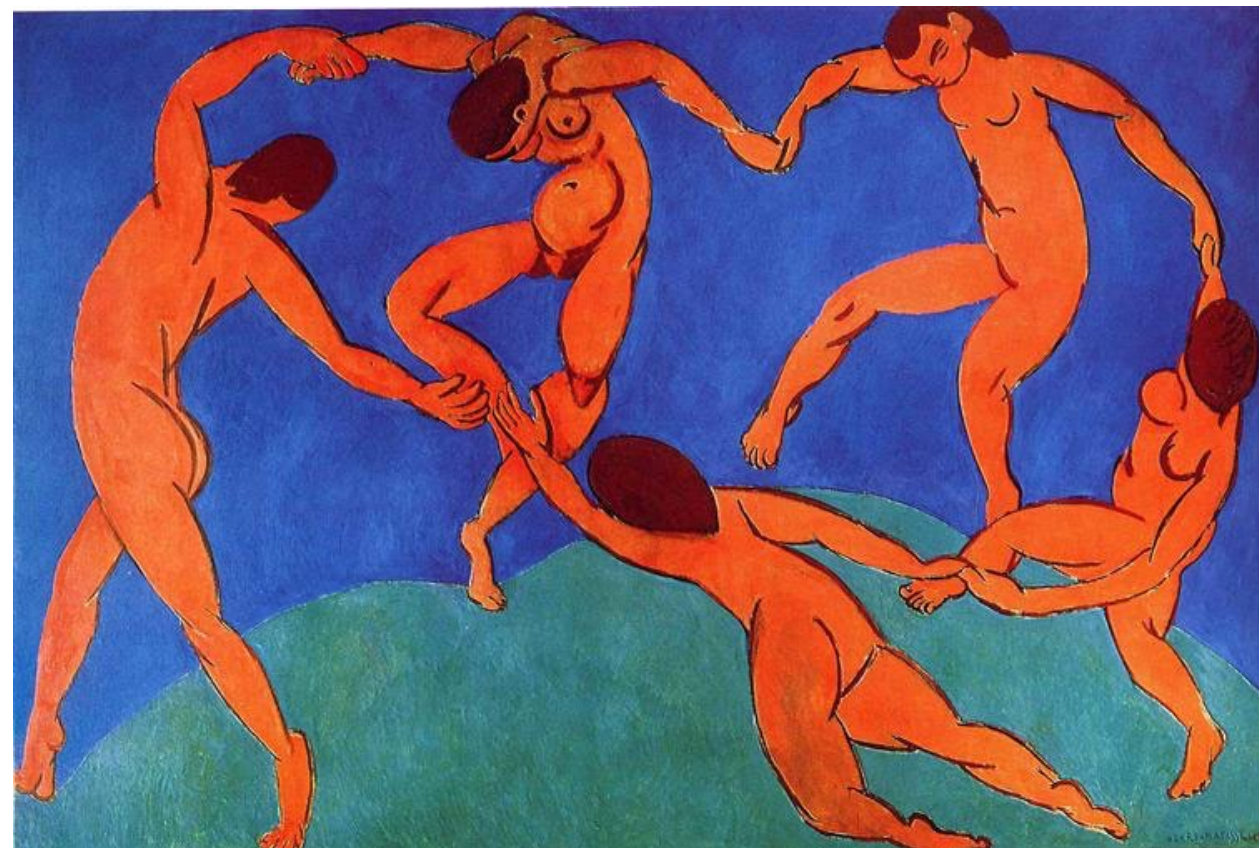


Large Reclining Nude



Blue Nude II

DANCES WITH MATISSE

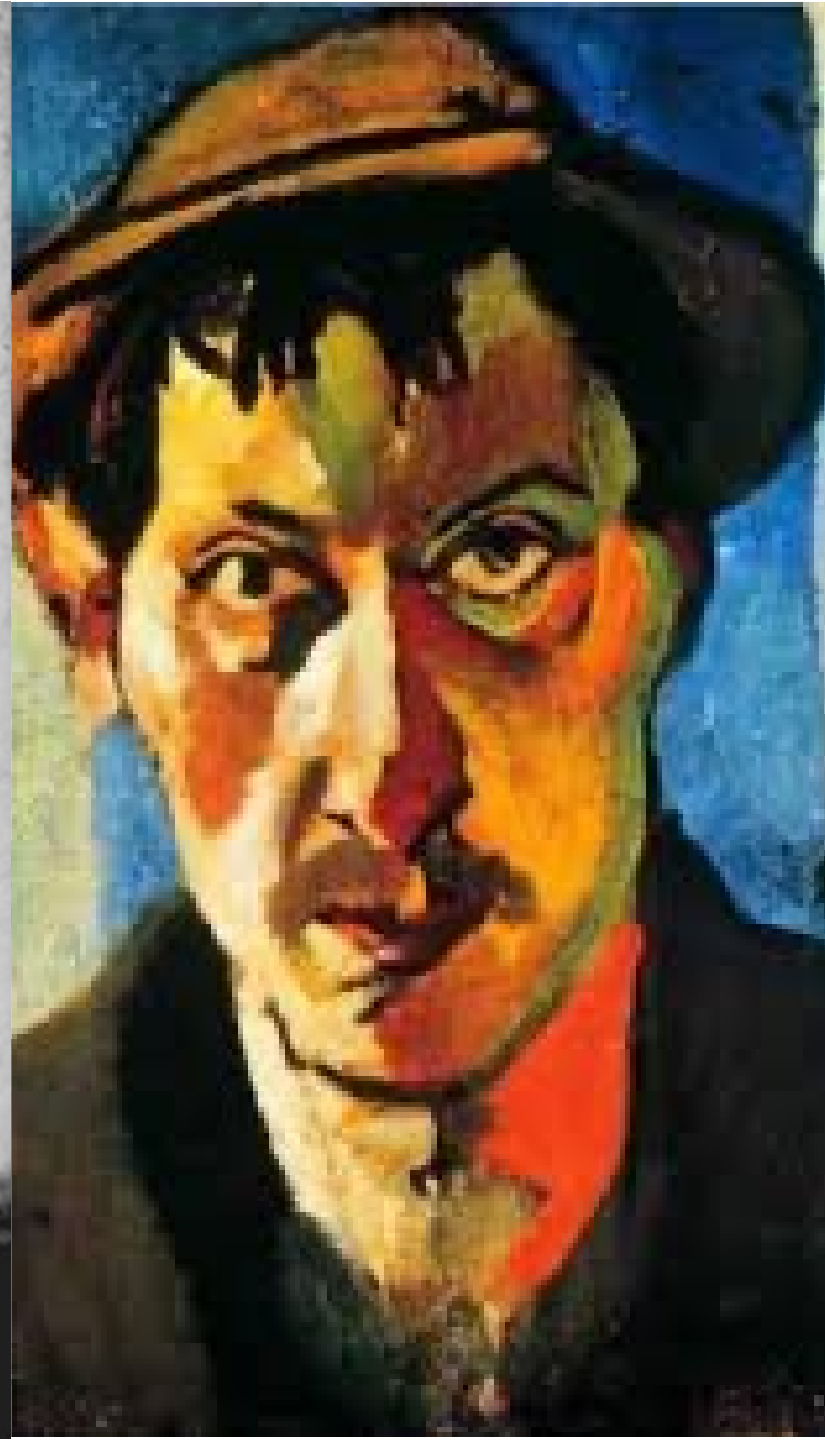


THE BARNES COLLECTION



ANDRÉ DERAIN

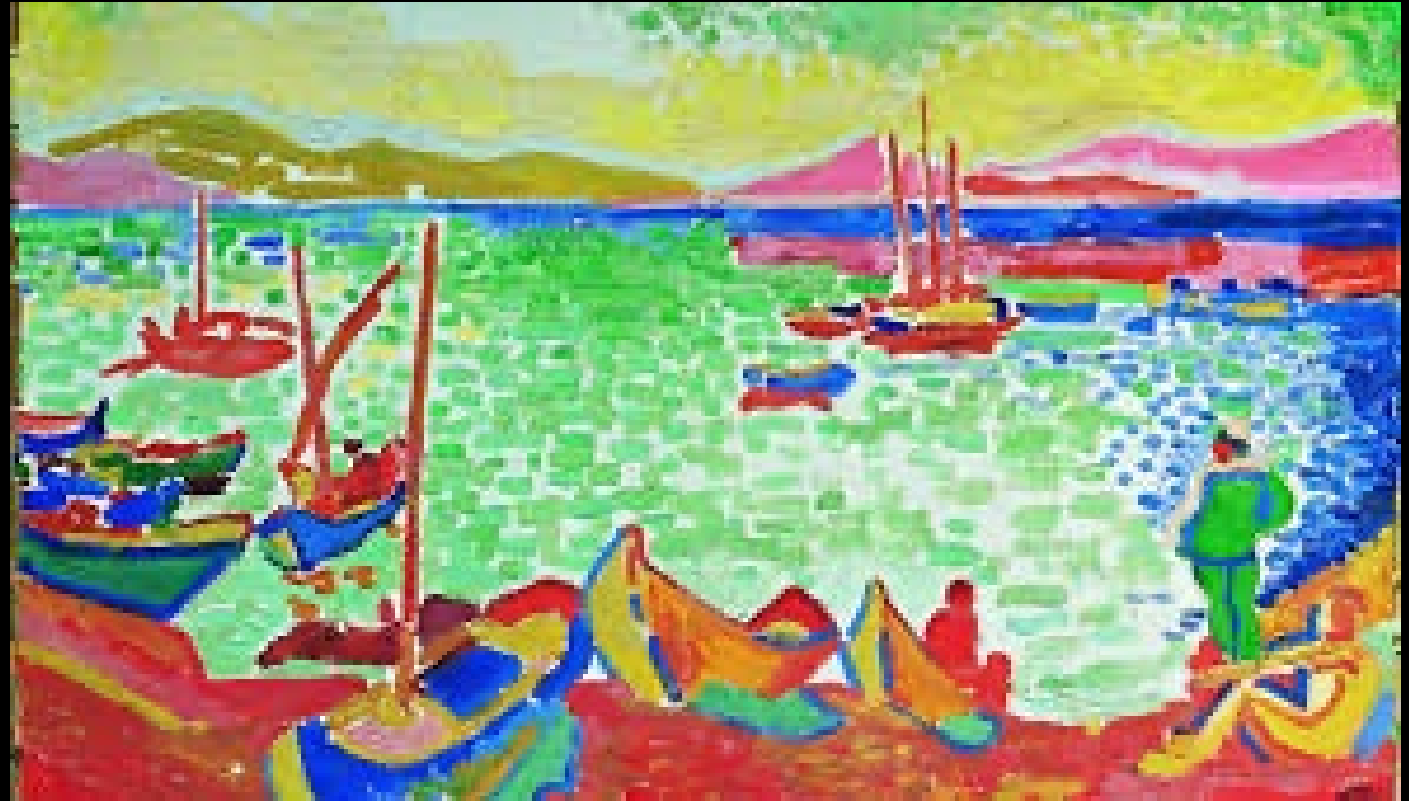
1880 - 1954



BOATS AT COLLIOURE



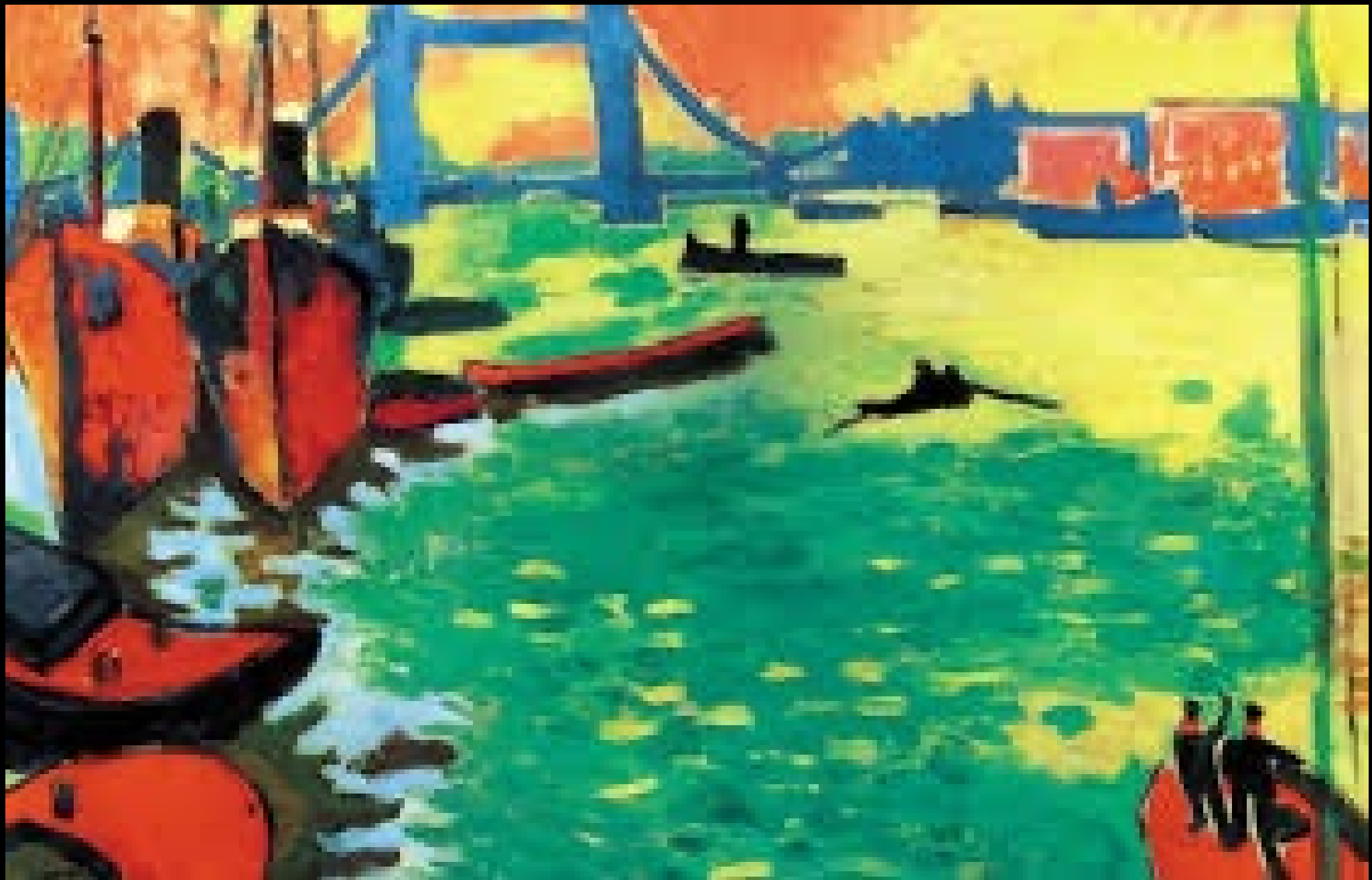
BOATS IN THE HARBOR



"Fauvism was our ordeal by fire...colors became charges of dynamite. They were expected to charge light..."

The great merit of this method was to free the picture from all imitative and conventional contact"

**LONDON
BRIDGE**



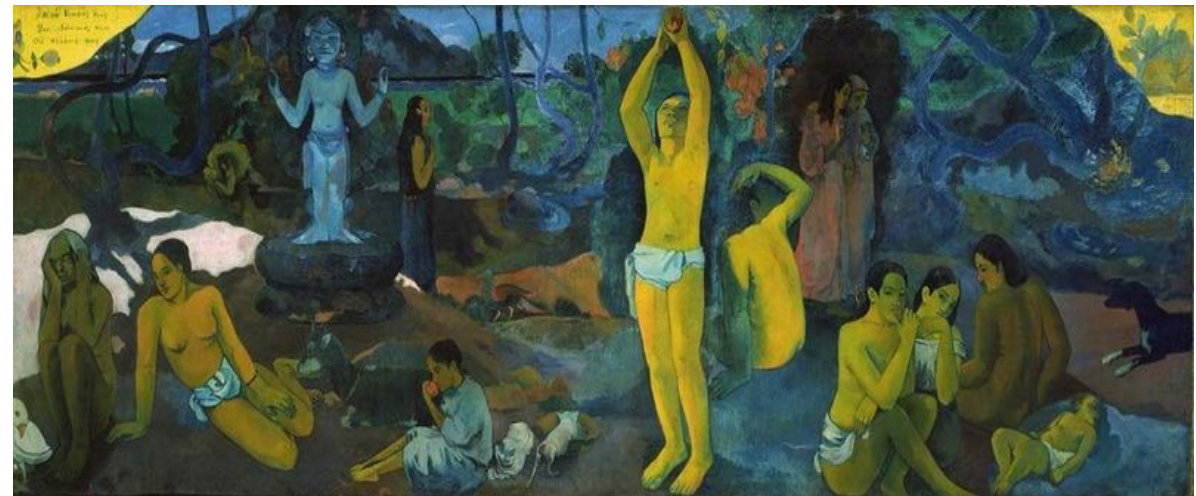
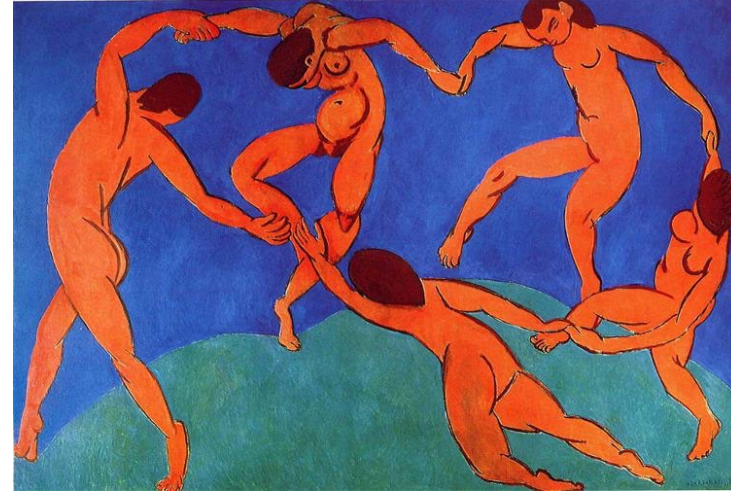
LONDON DERAIN AND...



Big Ben



THE DANCE AND INFLUENCES



THE BLUE RIDER GROUP





FRANZ MARC

1880 - 1916



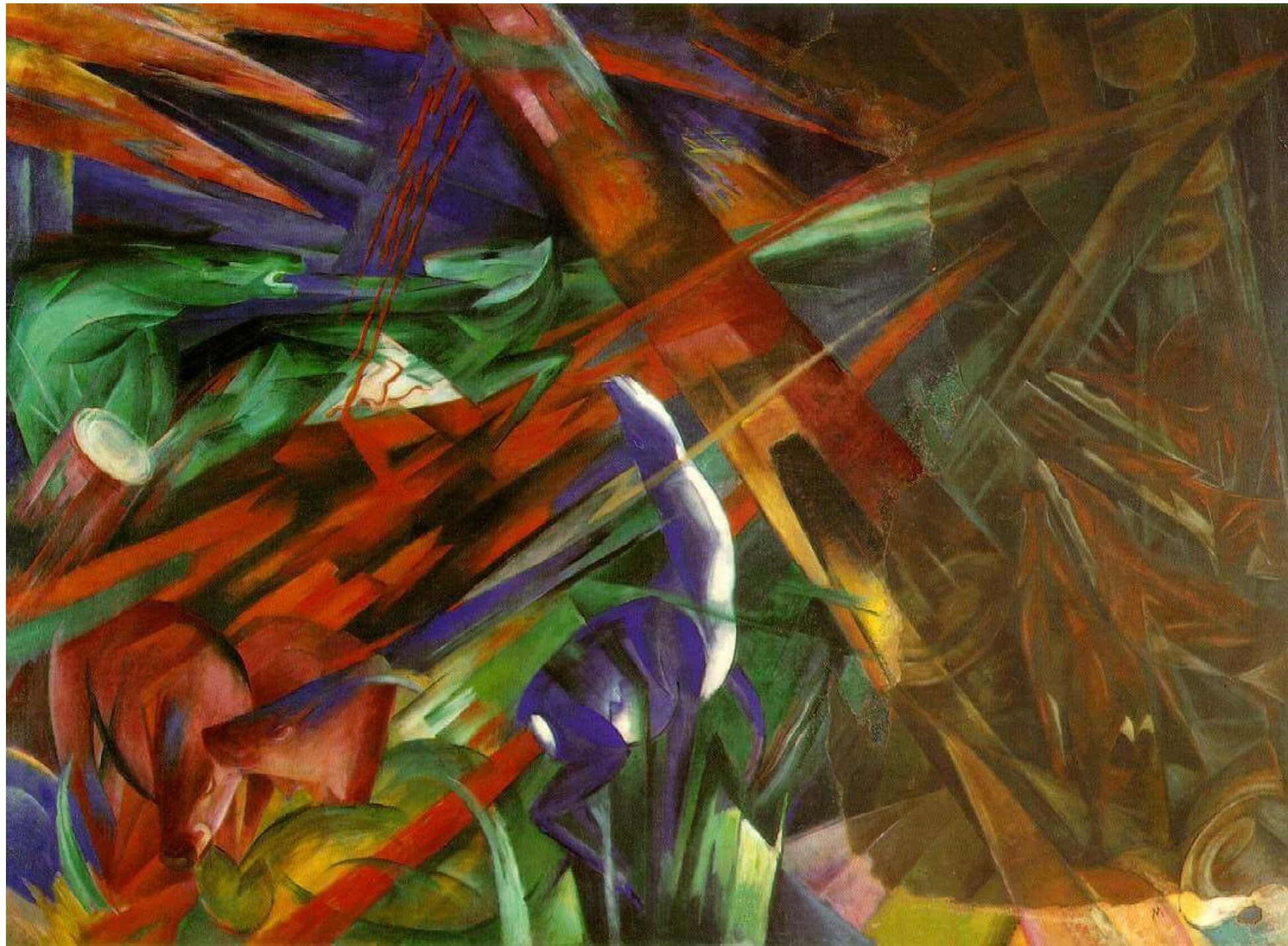
THE LARGE BLUE HORSES

THE YELLOW COW AND *THE DREAM*



*THE FATE
OF THE
ANIMALS*

AN
APOCALYPSE
IN ART



APOCALYPSES BY MICHELANGELO AND BRUEGEL



The Last Judgement 1541



The Fall of the Rebel Angels 1562

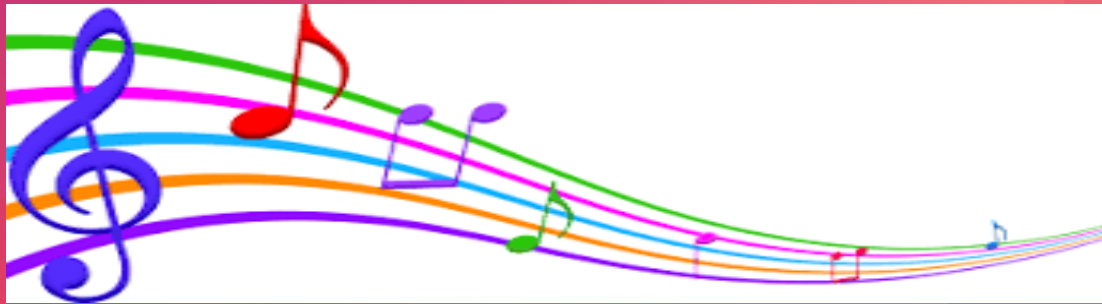
**WASSILY
KANDINSKY**

1866 - 1944



By Gabrielle Munter

CAN YOU PICTURE MUSIC?



**KANDINSKY
SAID YES**



Composition X



TRAVERSE LINE



COMPOSITION VII

Disney
FANTASIA



WALT DISNEY ALSO SAID YES
AND BROUGHT COLOR AND
MOTION TO MUSIC

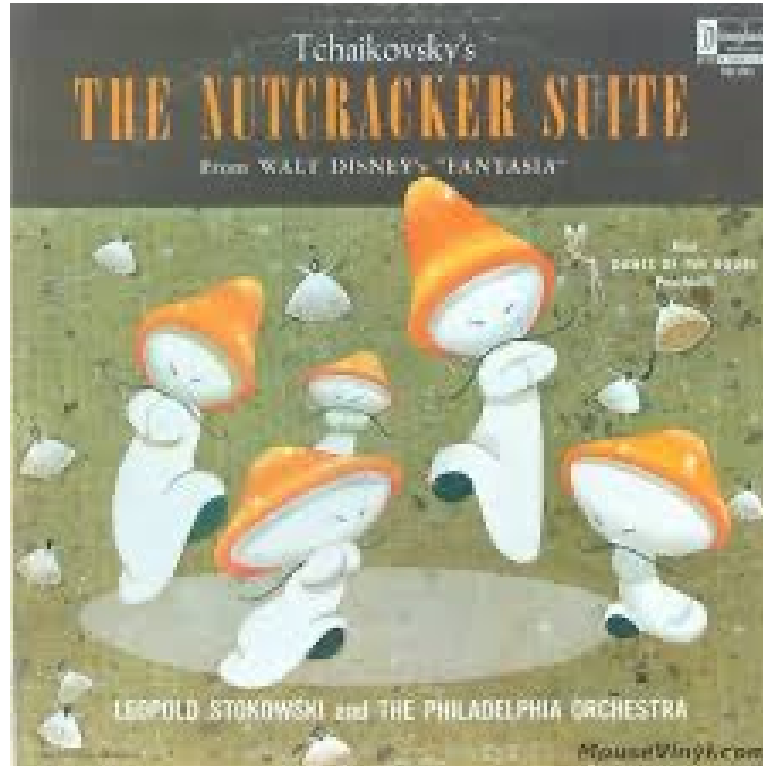


Fantasia "Night on Bald Mountain" Concept Painting by Kay Nielsen

A MASTERPIECE IN MOTION— IN 1940!



Walt Disney and
Leopold Stokowski
Deems Taylor and 1000
Artists and technicians



**“ BACH'S TOCCATA AND FUGUE IN D MINOR ”
PHILADELPHIA ORCHESTRA CONDUCTED BY LEOPOLD
STOKOWSKI**



YouTube Videos

CREATING THE SIGHT AND SOUND OF MUSIC

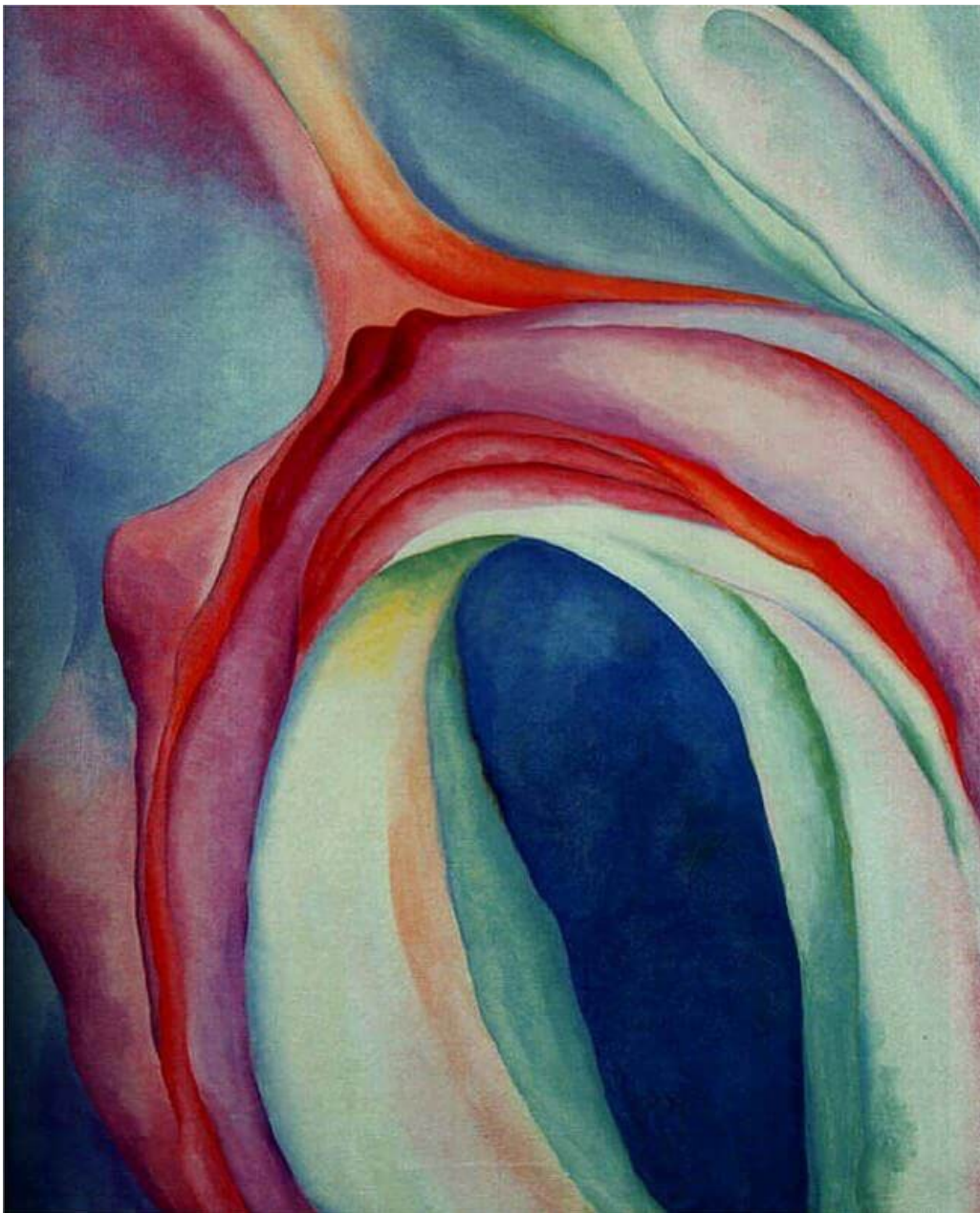


1923 – 1940 Los Angeles



The NEW Animation Building, Burbank

AND SHE
PAINTED
MUSIC TOO



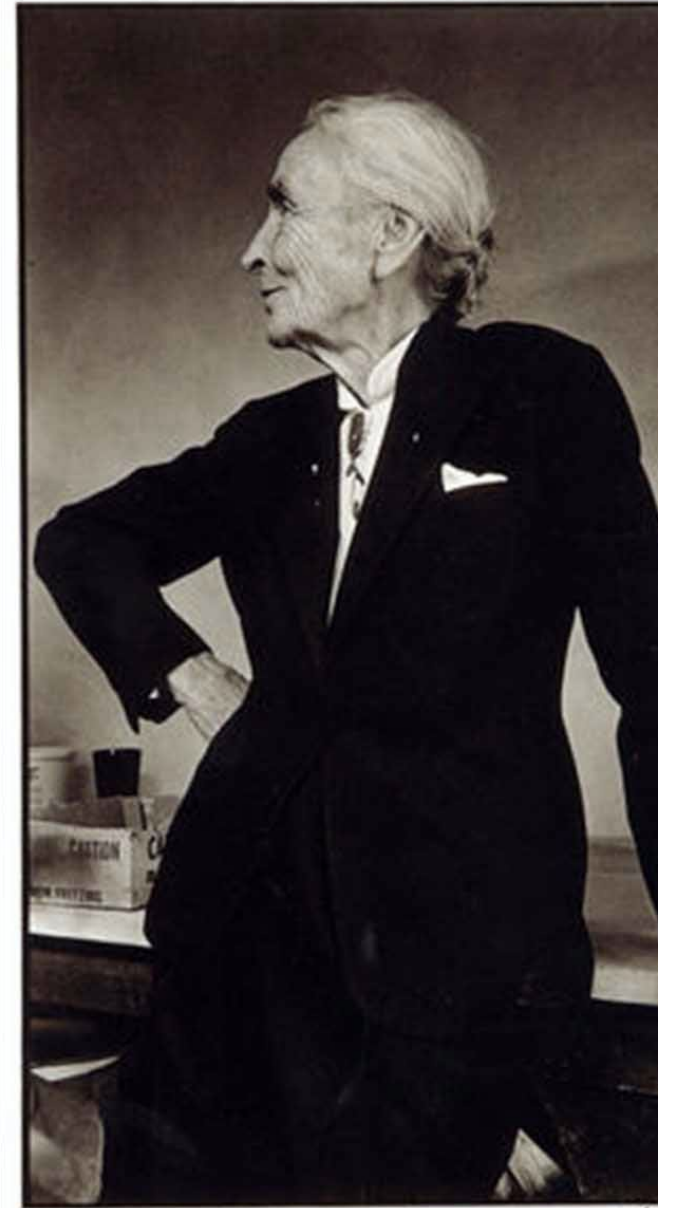
Music Pink and Blue #2

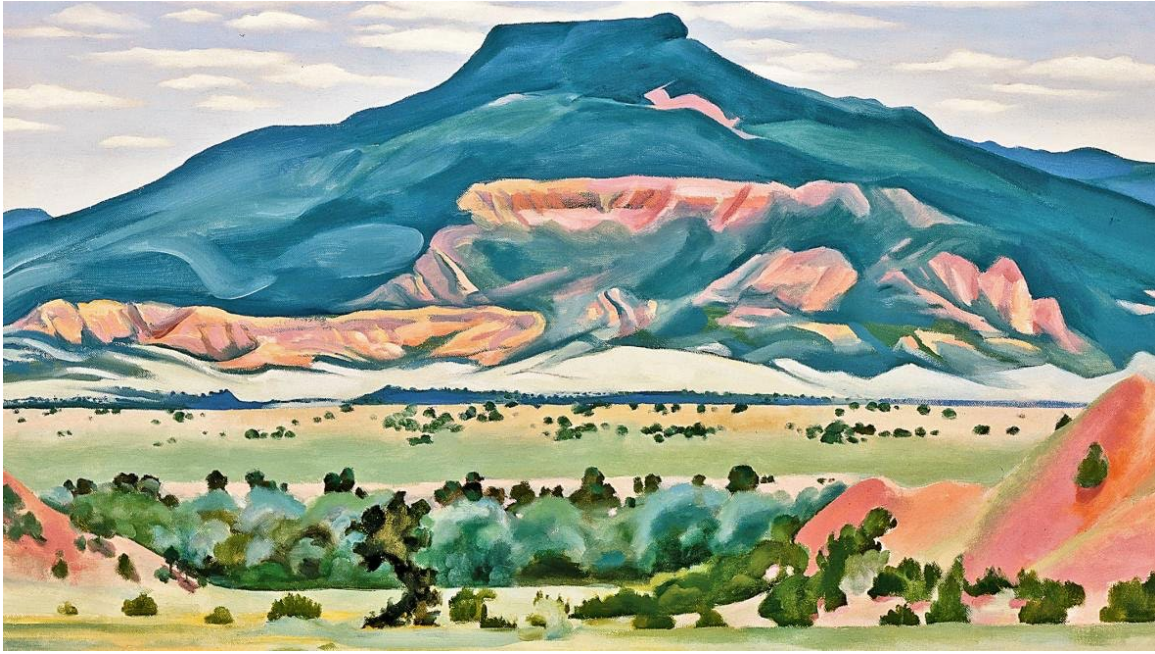


Blue and Green Music

GEORGIA O'KEEFFE

1887 - 1986





My Front Yard, Summer, 1941

NEW MEXICO, LAND OF ENCHANTMENT

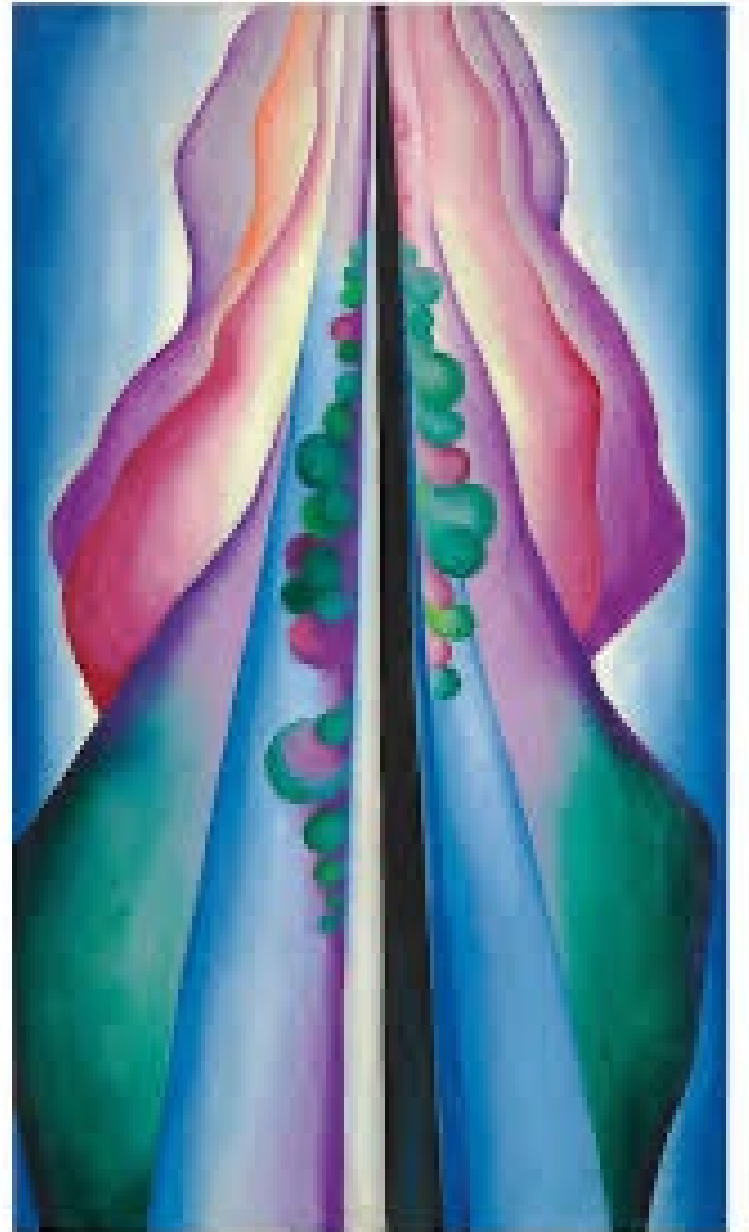
Red and Yellow Cliffs



COLORS OF ENCHANTMENT



Lake George Reflection



GEORGIA'S BONES



From the Faraway Nearby



Ram's Head, White Hollyhock-Hills

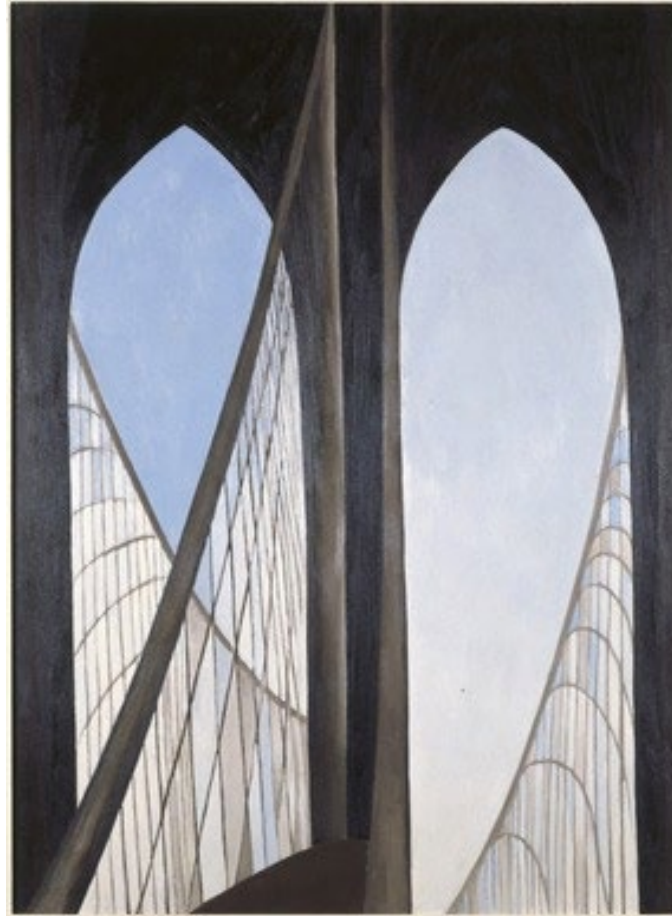


Cow's Skull: Red, White, and Blue

PELVIS SERIES AND BROOKLYN BRIDGE



O'Keeffe 1943- 44



O'Keeffe 1949



Alfred Stieglitz. 1914

RED CANNA



BLUE FLOWER



RED POPPY



JIMSON WEED



Georgia O'Keeffe is best known for her close-up, or large-scale flower paintings, which she painted from the mid-1920s through the 1950s. She made about 200 paintings of flowers of the more than 2,000 paintings that she made over her career.¹ One of her paintings, *Jimson Weed*, sold for \$44.4 million, making it the most expensive painting sold of a female artist's work as of 2014

O'Keeffe was immensely fond of jimson weed, a species of *Datura*. She ignored its seeds' toxicity, allowing it to flourish around her patio. She paid tribute to the bloom in this painting, originally entitled *Miracle Flower*. *Jimson Weed* was commissioned by cosmetics magnate Elizabeth Arden for the new Gymnasium Moderne of her Fifth Avenue Salon in New York City. Placed in the exercise room, the unfurling blossoms were meant to encourage clients in their stretches. Arden paid \$10,000 for the largest floral composition O'Keeffe would ever create. . It is 70" x 80" (Almost 6 feet x 7 feet)!

**WHOSE
IRISES?**



COLOR HER AMERICAN

